



# LiBACKPACK C50

Mobile Backpack 3D Mapping System



GreenValley International

# LiBackpack C50

LiBackpack C50 is an advanced SLAM-based 3D mapping system which integrates LiDAR and 360° imaging technologies to produce true color point clouds. Functional in both handheld and backpack modes, the LiBackpack C50 is a flexible mobile laser scanning solution for indoor and outdoor applications. Users can opt for a LiDAR-only solution when colorized point clouds are not required.



## Operational Versatility

The backpack mode allows for a true hands-free experience while the handheld mode offers a wider FOV.



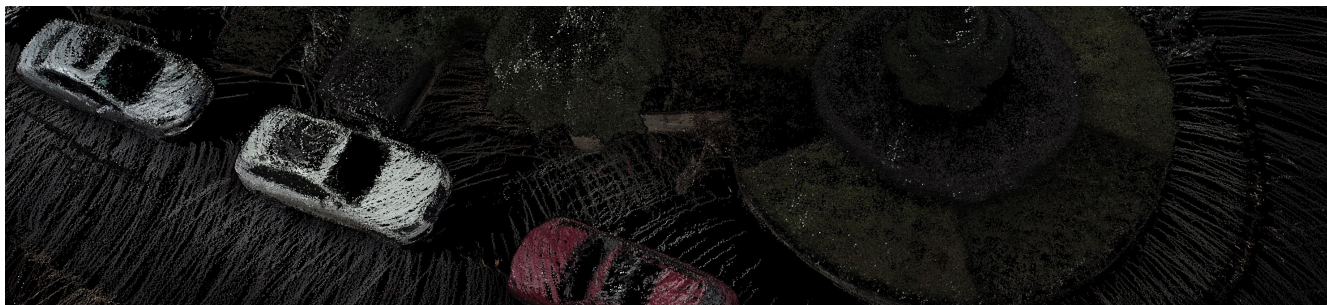
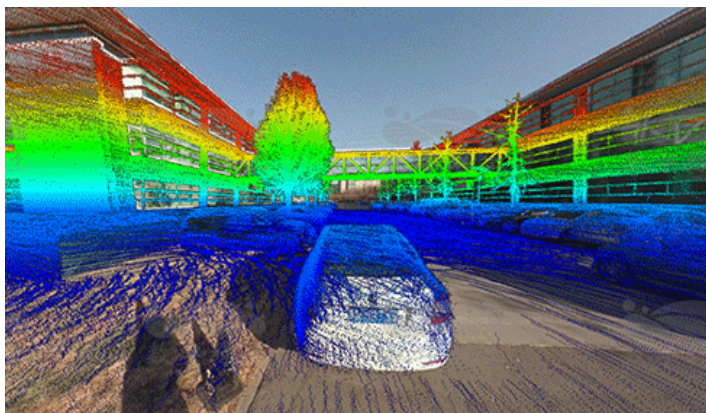
## Real-Time Data Visualization

Visualize the point cloud in real-time via the connected device (wired/wireless). The LiBackpack user interface also displays device status information.



## Advanced SLAM Solution

Robust SLAM algorithms that includes automatic loop closure & a system capable of producing a real-time point cloud.



## Specifications

Dimension(mm)	1055*288*170
Weight	6.6 kg
Battery	5700 mAh
Typical Ground Speed	1 m/s
Working hours	~2 hour w/ DJI TB48S battery
Storage	512G SSD
Port	HDMI, Ethernet & USB 3.0
Suitable environment	Indoor and outdoor
Processor	Quad-core eight threads
Operation & Data Transfer	WiFi connection (mobile phone, tablet)
	Wired Ethernet connection (tablet)
Laser Sensor	VLP16
Accuracy	±3 cm
Horizontal FOV	360°
Measuring range	100 m
Camera	Panoramic Camera
Resolution	3840*1920
Frame rate	30 fps
Relative Accuracy	≤ 3 cm*
Point cloud format	las, laz, ply, LiData