

LiPod P1

3D Laser Scanner



The LiPod P1 3D Laser Scanner is a high-precision long-range scanner released by GreenValley International (GVI), which is easily capable of highprecision point cloud data acquisition tasks in various complex environments. The scanner combines fully automatic and semi-automatic registration algorithms to achieve fast data scanning and registration into a map, bringing users a new experience of using a scanner.



LiPod P1

Features

Long Measurement Range: 600 m

High Precision: 5 mm @ 100 m

Fast Speed: 6 mm point interval at 10 m per station, point cloud colorization in just 100 s

Intelligent Registration: 0 targets, 75 stations, automatic registration success in 58 minutes

Versatile Application: Paired with LiDAR360/ LiDAR360MLS software, the industry applications are beyond imagination.

Specifications

Weight	5.3 kg (including battery)
Type	Pulsed Precise Scan Technology
Laser Class	1
Range	600 m (90% reflectivity)
Range Accuracy	5 mm @ 100 m
Scan Rate	1,200,000 pts/sec
Angular Resolution	0.001° (H./V.)
Scanning FOV	360° (H.) & 300° (V.)
Laser Beam Divergence	0.3 mrad
Data Storage	256 GB USB Drive
Photo Resolution	Inbuilt (24.6 MP in total, 2x12.3 MP)
Total Capture Pixels	>100 MP
Screen	5 Inch 720x1280 Touch Screen
Compensation	Compensating Range $\pm 10^\circ$
	Resolution 0.001°
Power Supply	25 W
Battery Life	> 4 h
Working Temperature	-20°C ~ 60°C
Storage Temperature	-35°C ~70°C
Protection Level	IP54

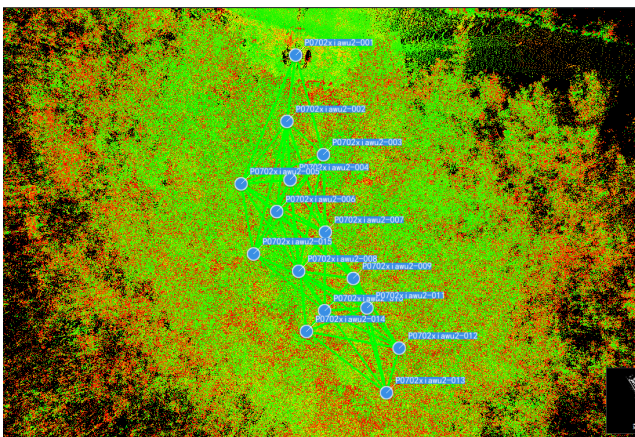
Applications



Fine scanning of power transmission no-fly zones



High-precision modeling and scanning of substations



Fully automatic registration of forest land



Tree scanning effect



Indoor scanning and modeling



Wall flatness scanning and inspection